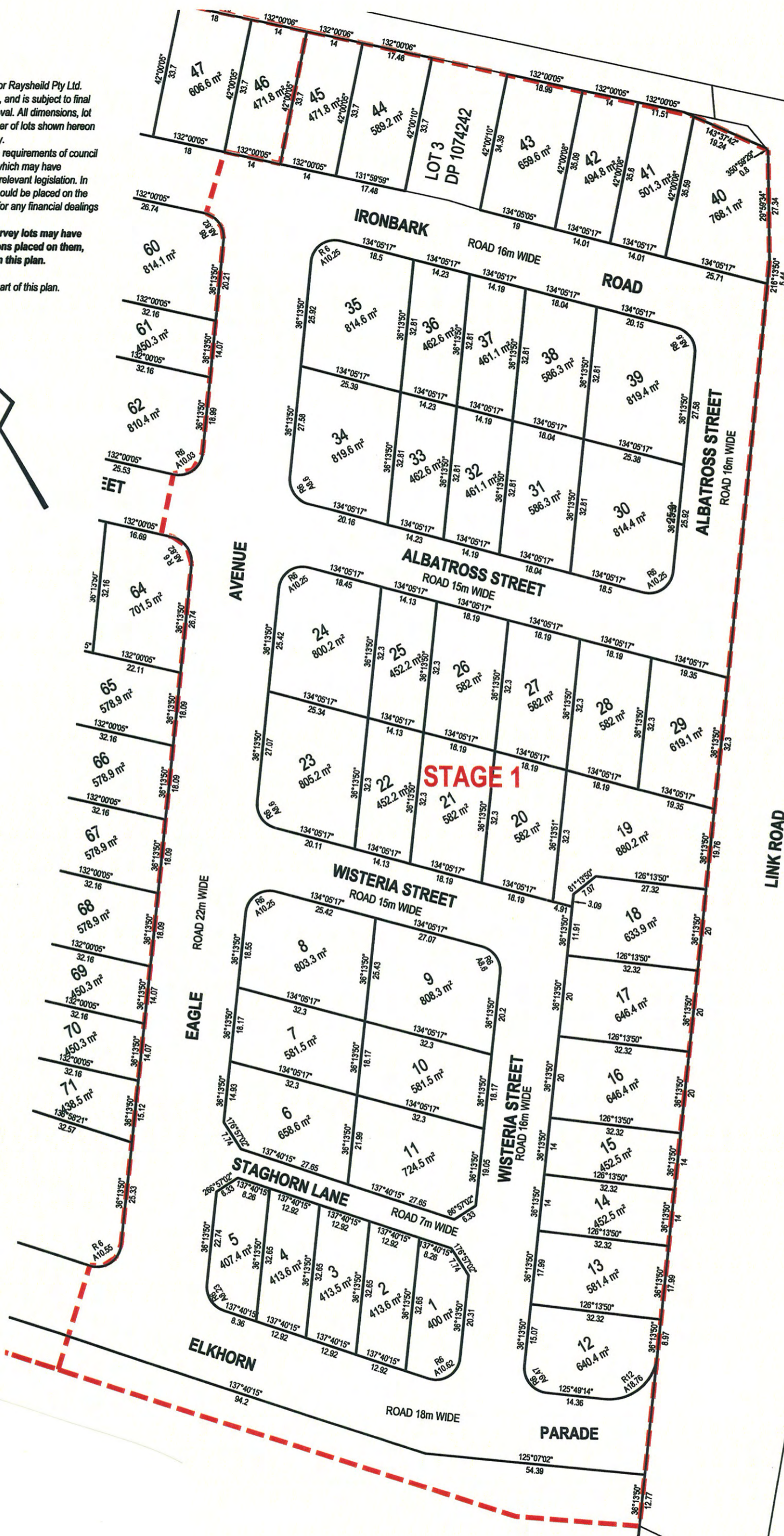


**DISCLAIMER:**

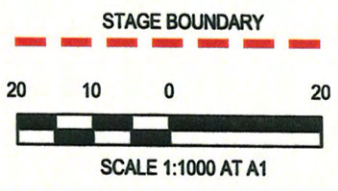
This plan was prepared for Raysheid Pty Ltd. This is a subdivision plan, and is subject to final survey and council approval. All dimensions, lot shapes, areas and number of lots shown hereon are subject to final survey. It is also subjected to the requirements of council and any other authority which may have requirements under any relevant legislation. In particular, no reliance should be placed on the information on this plan for any financial dealings involving the land. Note that upon final survey lots may have easements or restrictions placed on them, these are not shown on this plan.

This note is an integral part of this plan.



**STAGE 1**

**STAGE 1 LOT COUNT**  
NEW LOTS 45



**STAGE 1 LOT CALCULATION PLAN  
FERNGROVE  
NORTH BALLINA  
FOR Raysheid Pty Ltd**

SCALE: 1 : 1000 at A3  
LGA: Ballina  
LOCALITY: North Ballina  
SURVEYED: .  
DRAWN: GC  
APPROVED: TH  
DATE: 14.01.2009  
COGO: LM070113-lot calc  
Dwg. No. LM070113-SV21A